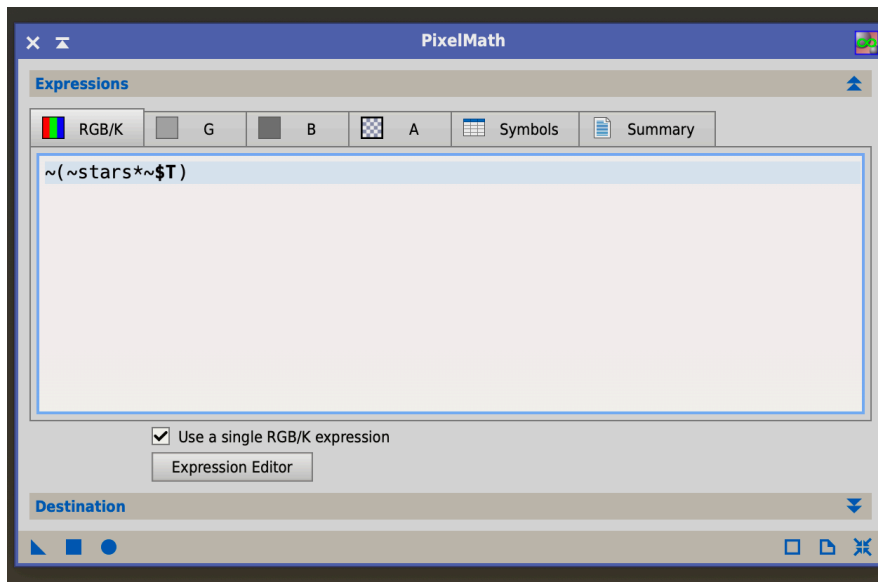
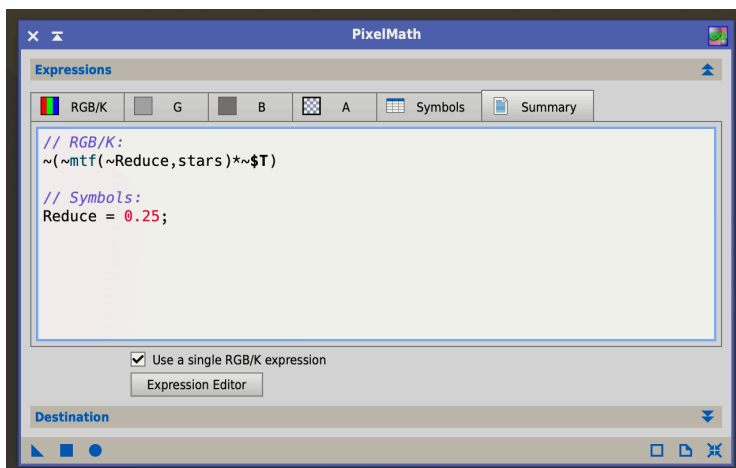
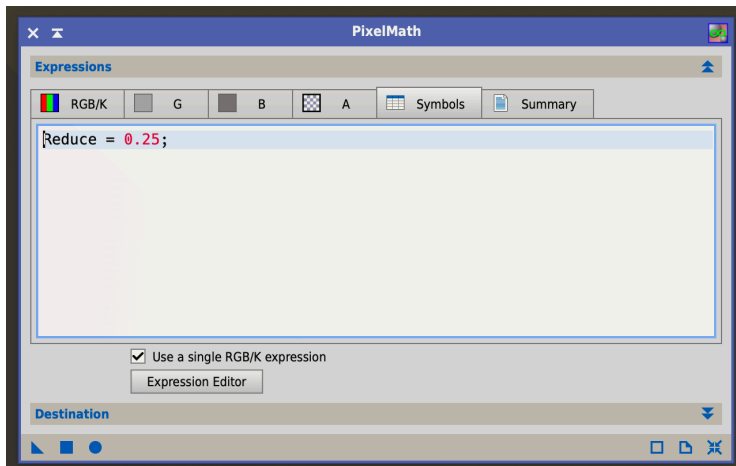
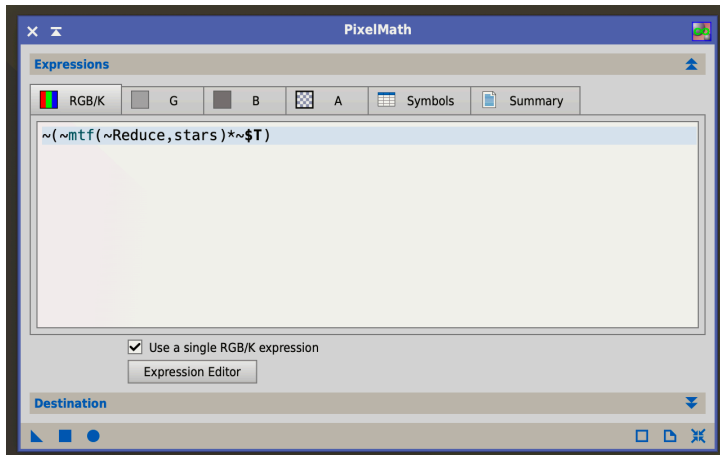


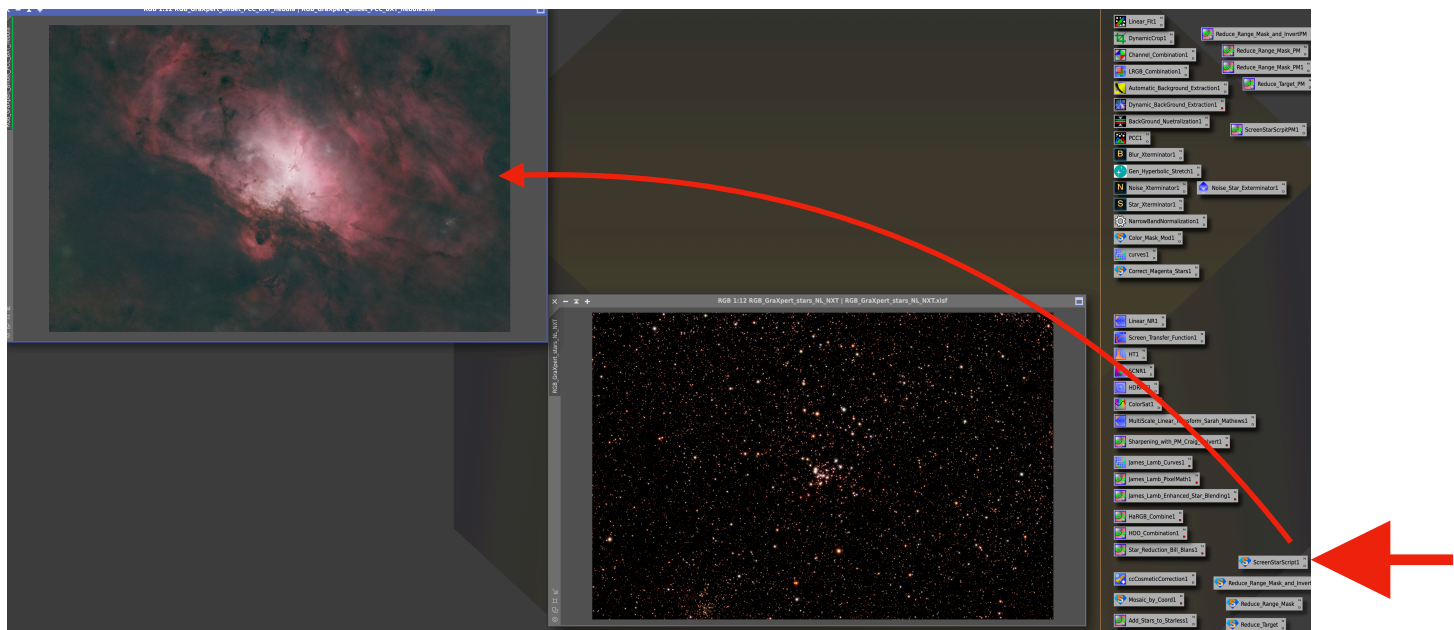
PixInsight Scripts using Pixelmath UI

- Making your own Scripts in PixInsight
- Very complex or simple ones to save steps on a repetitive task
- Bill Blanchen - AnotherAstroChannel YouTube
- Build your own Script in Pixinsight with Pixelmath UI - Part-1
- Example to add stars to starless image and control star size, all in one simple script.

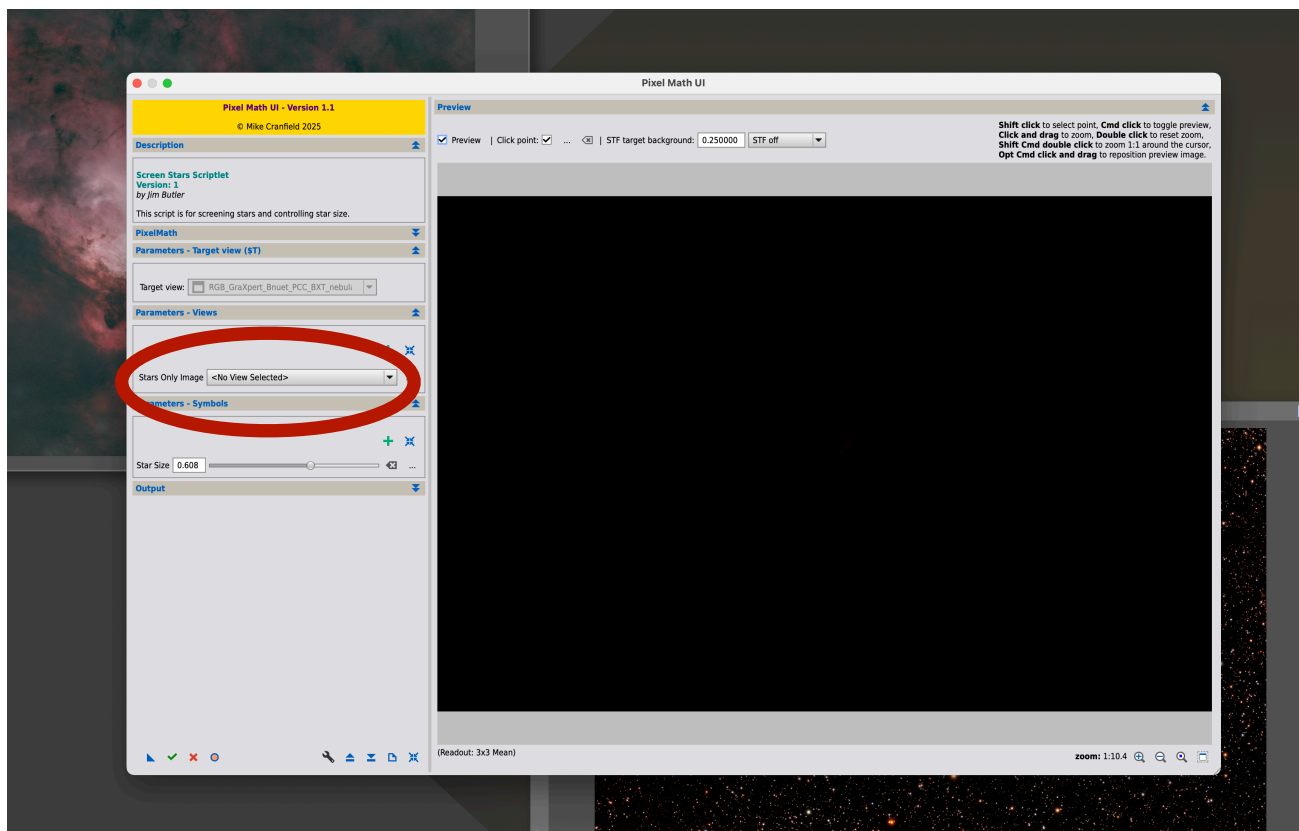


- basic PM script to add stars to starless target(above).
- PM script to add stars to starless target and control star size (below) using mean transfer function(mtf). This PM script used in a re-useable script.





- Drag Script onto starless target image (above).
- Select star image via pulldown selection circled (below).



- Select star image via pulldown selection circled (below)
- Use slider to control star size (bottom image). Default is 0.500 for slider. Image updates immediately.

